



818-787-1988

allomatic.net

SL-90 DC

SLIDE GATE OPERATOR

Our most popular **DC Slide Gate Operator** equipped with a standard mechanical foot pedal release



SL-90 DC

- ✓ For Gates Up To 1,600 Lbs. and 50 Ft. Long
- ✓ Mechanical Foot Pedal Release
- ✓ Integrated Battery Backup
- ✓ Post Mount and Pedestal Options Available
- ✓ Compact, Low-Profile Frame
- ✓ Maintenance Free Brushless DC Motor



RESIDENTIAL



COMMERCIAL



MECHANICAL FOOT PEDAL RELEASE



INNOVATIVE CIRCUIT BOARD



WISE M/S COMPATIBLE



24VDC SOLAR POWER OPTION

SLIDERS | SWINGERS | OVERHEADS

The standard by which all other automatic gate operators are measured.

SCAN FOR PRODUCT INFORMATION



UL 325 2018 COMPLIANT

UL 991 COMPLIANT

CSA C22.2 #247



ALL-O-MATIC



818-787-1988

allomatic.net

SCAN FOR
PRODUCT
INFORMATION



SL-90 DC

SLIDE GATE OPERATOR

SPECS



Max Gate Weight	1,600 lbs.
Max Gate Length	50 feet
Warranty	7 year residential - 5 year commercial
Motor	24 VDC brushless - ½ HP motor
Gate Speed	12" per second
Power Options	115/230 VAC single phase and 24 VDC solar panel
Duty Cycle	Continuous
Battery Back Up	Integrated, with (2) 7Ah 12VDC batteries
Battery Back Up Capacity	150 cycles on a 1,000 lb. gate
Temperature Range	-40 to 160°
Gearbox Ratio	20:1 with internal disconnect
Width X Length X Height	15.5" X 18.5" X 16"
Shipping Weight	95 lbs.
Emergency Release	Mechanical foot pedal release
Belt Size	4L-230 (AX21)
Main Sprocket Size	41B22X7/8
Chain Size	41NP (20' included)
Gearbox Sprocket	N/A
Limit Shaft Sprocket	41B15X5/8
Breaker Requirement	20 amp dedicated
Gearbox Pulley	2 ½" with 5/8" bore
Motor Pulley	2" with 5/8" bore

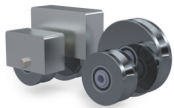


RESIDENTIAL

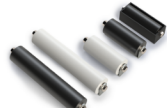


COMMERCIAL

AVAILABLE ACCESSORIES



V-Groove
Wheels



GUIDE
Rollers



Fire
Boxes



Solar
Panel



PRIME VD-1
Loop Detector

The Warrantor warrants the SL-90 DC Gate Operator. ALL-O-MATIC INC warrants its gate openers for a period of five (5) years in commercial installations, and for a period of seven (7) years in residential installation to be free from defects in circuitry, motor, gear box and workmanship. This warranty applies from the date of purchase to the original owner. Warrantor will repair or, at its option, replace any device which it finds to require service. This device must be sent to the warrantor at the consumer's expense. The warrantor will return the repaired or replaced unit to the customer at the consumer's expense. Labor charges for dealer service or replacement are the responsibility of the owner. These warranties are in lieu of all other warranties either expressed or implied, and ALL-O-MATIC INC shall not be liable for consequential damage. All implied warranties of merchantability and or fitness for a particular purpose are hereby disclaimed and excluded. This limitation is not valid in jurisdictions which do not allow limitation of incidental or consequential damages or limitation of warranty periods. Caution in order to obtain this policy, please complete the registration card and send it by mail within 30 days of purchasing from ALL-O-MATIC INC. or your INSTALLER. If not registered only a one year warranty on all parts will be provided.

The standard by which all other automatic gate operators are measured.

UL 325 2018
COMPLIANT

UL 991
COMPLIANT

CSA C22.2 #247

