

ALL-O-MATIC®



818-787-1988

allomatic.net

SW-300 AC

SWING GATE OPERATOR

Our **AC Swing Gate Operator** is a high performance, reliable, and durable solution for automating the opening and closing of swing gates.



SW-300 AC

- ✓ For Gates Up To 800 Lbs. and 20 Ft. Long
- ✓ Easy Access Door
- ✓ 60:1 Gearbox Ratio
- ✓ Adjustable Torque Limiter



RESIDENTIAL



COMMERCIAL



ACCESS DOOR
LOCK



INNOVATIVE
CIRCUIT BOARD



POWERFUL
AC MOTOR

SLIDERS | SWINGERS | OVERHEADS

The standard by which all other automatic gate operators are measured.

SCAN FOR
PRODUCT
INFORMATION



UL 325 2018
COMPLIANT

UL 991
COMPLIANT

CSA C22.2 #247



ALL-O-MATIC



818-787-1988

allomatic.net



SCAN FOR
PRODUCT
INFORMATION

SW-300 AC

SWING GATE OPERATOR

SPECS



Your paragraph text

Max Gate Weight	800 lbs.
Max Gate Length	20 feet
Warranty	7 year residential - 5 year commercial
Motor	½ HP motor
Gate Speed	17 seconds per 90° opening
Power Options	120 VAC
Duty Cycle	Continuous
Battery Back Up	N/A
Battery Back Up Capacity	N/A
Temperature Range	-40 to 160°
Gearbox Ratio	60:1
Width X Length X Height	12" X 17" X 25.5"
Shipping Weight	110 lbs. + 35 lbs. arm
Emergency Release	Quick release arm
Belt Size	4L-340 (AX32)
Main Sprocket Size	40A54TX2 with torque limiter
Chain Size	40NP
Gearbox Sprocket	41B22X7/8
Limit Shaft Sprocket	N/A
Breaker Requirement	20 amp dedicated
Gearbox Pulley	8" with 5/8" bore
Motor Pulley	2" with 5/8" bore



RESIDENTIAL

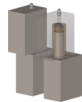


COMMERCIAL

AVAILABLE ACCESSORIES



AML-1200B
Mag Lock



GH-1500
Hinges



Fire
Boxes



APS-1000
Power Inverter



Goosenecks

The Warrantor warrants the SW-300AC Gate Operator. ALL-O-MATIC INC warrants its gate openers for a period of five (5) years in commercial installations, and for a period of seven (7) years in residential installation to be free from defects in circuitry, motor, gear box and workmanship. This warranty applies from the date of purchase to the original owner. Warrantor will repair or, at its option, replace any device which it finds to require service. This device must be sent to the warrantor at the consumer's expense. The warrantor will return the repaired or replaced unit to the customer at the consumer's expense. Labor charges for dealer service or replacement are the responsibility of the owner. These warranties are in lieu of all other warranties either expressed or implied, and ALL-O-MATIC INC shall not be liable for consequential damage. All implied warranties of merchantability and or fitness for a particular purpose are hereby disclaimed and excluded. This limitation is not valid in jurisdictions which do not allow limitation of incidental or consequential damages or limitation of warranty periods. Caution in order to obtain this policy, please complete the registration card and send it by mail within 30 days of purchasing from ALL-O-MATIC INC. or your INSTALLER. If not registered only a one year warranty on all parts will be provided.

SLIDERS | SWINGERS | OVERHEADS

The standard by which all other automatic gate operators are measured.

UL 325 2018
COMPLIANT

UL 991
COMPLIANT

CSA C22.2 #247

